

# USCL NURSING SIM LAB

OSE# H37-9515  
476 HUBBARD DRIVE  
LANCASTER, S.C. 29720

for



## PROJECT TEAM

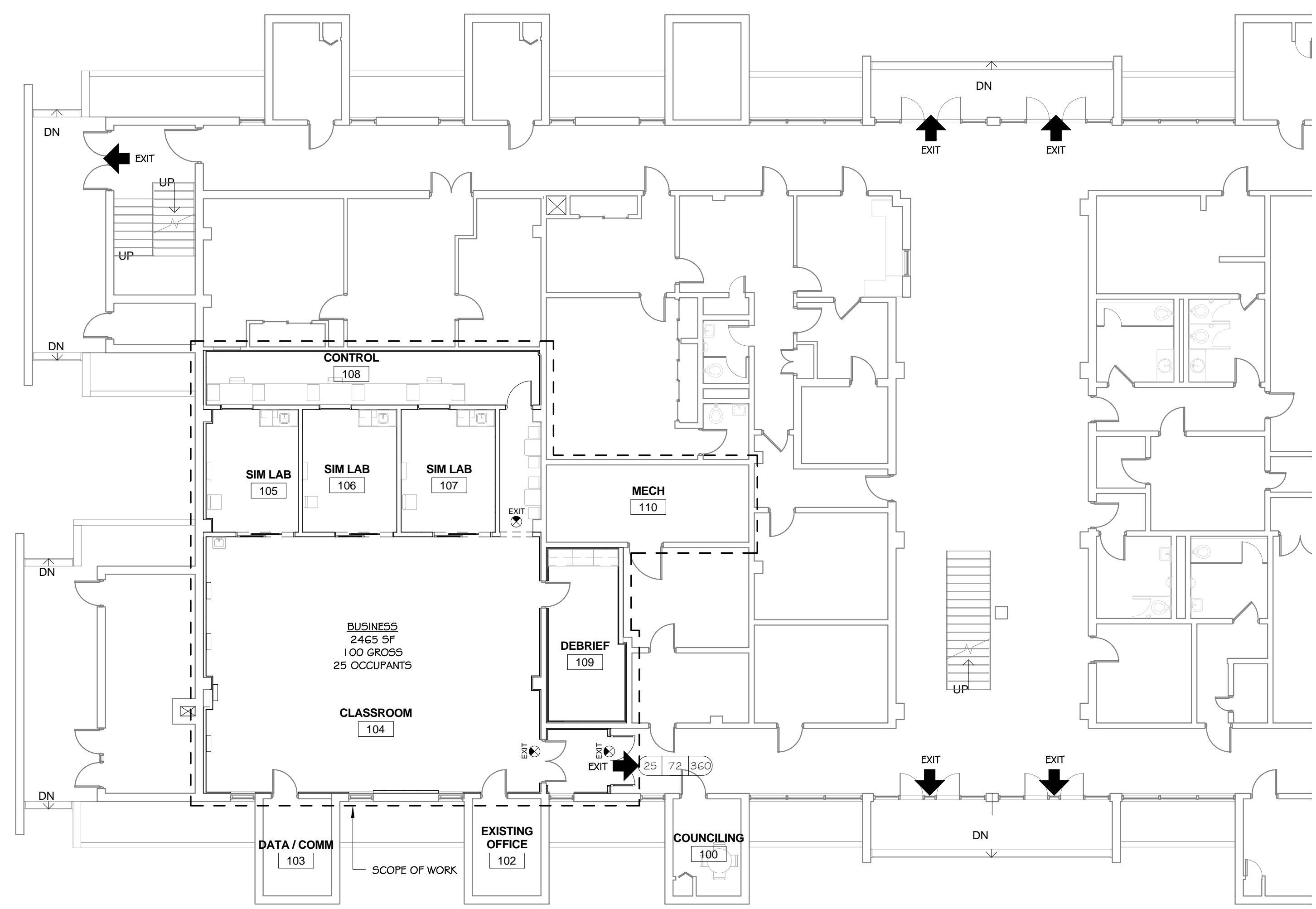
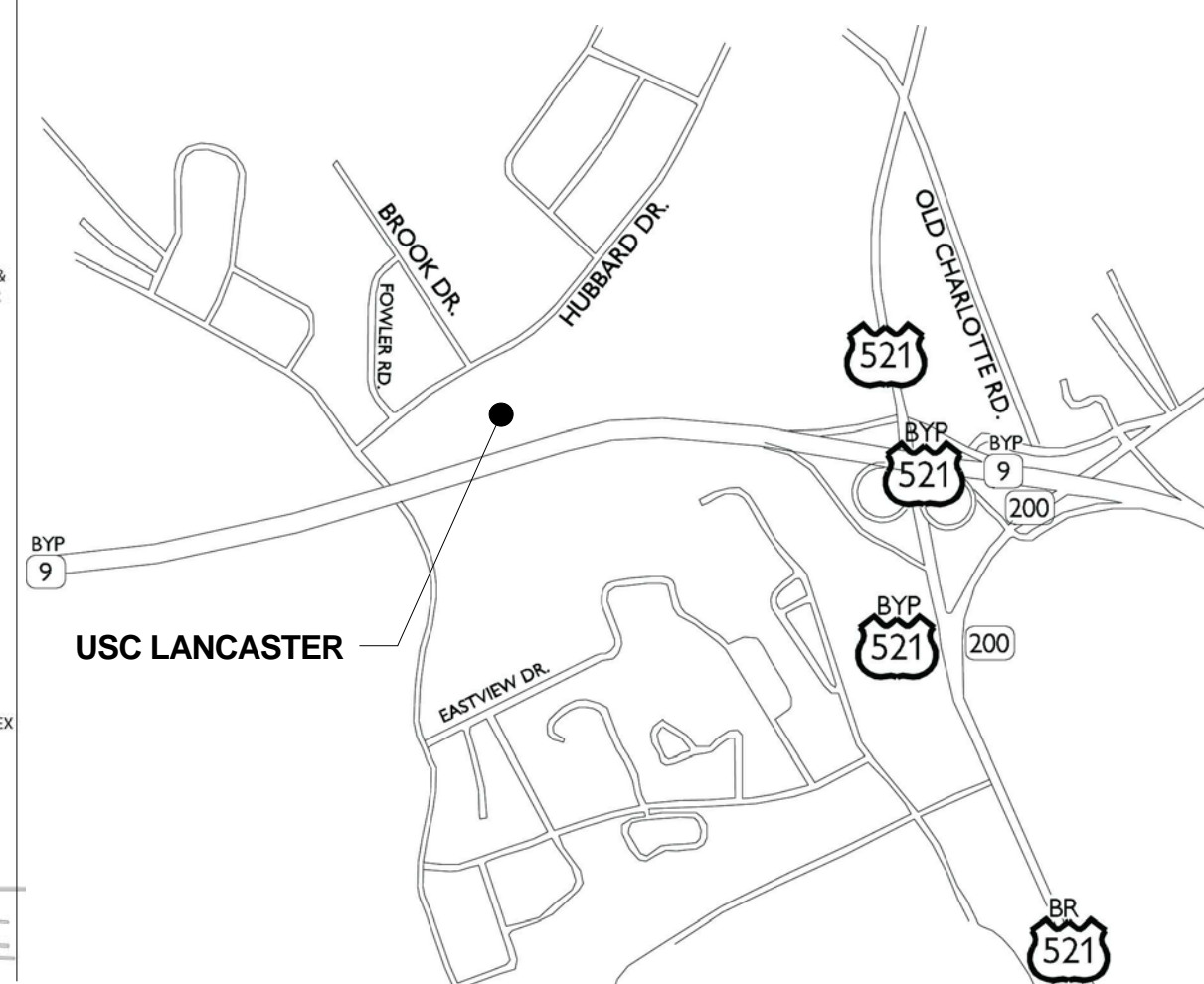
ARCHITECTS  
INTERIOR DESIGNERS  
ELECTRICAL ENGINEERS  
MECHANICAL ENGINEERS

GOODWYN MILLS AND CAWOOD, INC.  
GOODWYN MILLS AND CAWOOD, INC.  
LAND ENGINEERING ASSOCIATES  
MECHANICAL DESIGN INC.

## CAMPUS MAP



## VICINITY MAP



NOTE TO AHJ: THIS RENOVATION DOES NOT ALTER THE EXISTING EXIT OR EXIT ACCESS STRATEGY FOR HUBBARD HALL.

## 1 LIFE SAFETY PLAN

SCALE: 3/32" = 1'-0"

### BUILDING CODE SUMMARY

Name of Project: USCL NURSING LAB RENOVATION  
Address: 476 Hubbard Dr. Lancaster SC 29720  
Proposed Use: CLASSROOM (HIGHER EDUCATION) = BUSINESS  
Owner or Authorized Agent: USC LANCASTER Phone # (803) 313-7000  
Owned By:  City/County  Private  State  
Code Enforcement Jurisdiction:  OSE / USC  County

LEAD DESIGN PROFESSIONAL: Michael Keeshen, Architect 864.527.0460 mike.keeshen@gmcnetwork.com  
DESIGNER FIRM NAME PHONE # E-MAIL  
Project Mgr Goodwyn, Mills & Cawood Matthew King 864.527.0460 matthew.king@gmcnetwork.com

YEAR EDITION OF CODE: 2012 International Existing Building Code  
 New Construction  Renovation (Existing Bldg.)  Upfit  Alteration

**BUILDING DATA** IBC

Construction Type:  II-B  
Sprinklers:  No  Yes  
Standpipes:  No  Yes  
Fire District:  No  Yes  
Building Height: 2 Story  
Mezzanine:  No  Yes  
High Rise:  No  Yes

Gross Building Area (sq. ft.):

FLOOR	EXISTING	NEW	RENO/ UPFIT
BASEMENT	NA	NA	NA
FIRST FLOOR	22,555	0	2,465
SECOND FLOOR	15,055	0	0
THIRD FLOOR	NA	NA	NA
FOURTH FLOOR	NA	NA	NA
TOTAL	37,610	0	2,465

**ALLOWABLE AREA**  
Primary Occupancy:  Business  
Mixed Occupancy:  No

**FIRE PROTECTION REQUIREMENTS**  
Life Safety Plan Sheet #, if provided: A-001

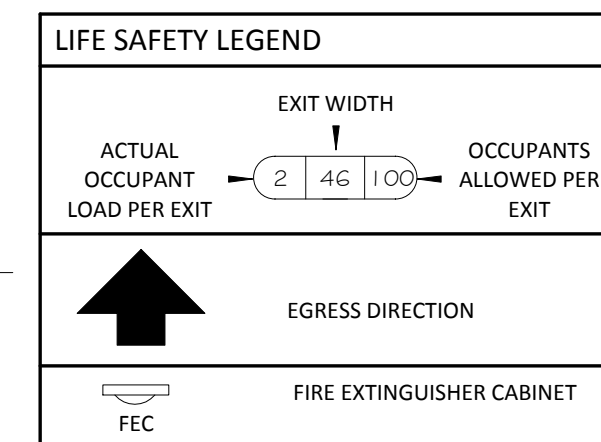
**BUILDING ELEMENT**

Corridor Separation	NA (No Change to Corridor)
Tenant Separation	NA

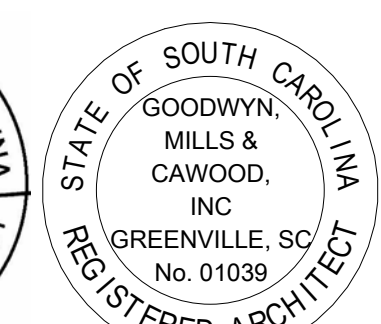
**LIFE SAFETY SYSTEM REQUIREMENTS**

Emergency Lighting:  No  Yes  
Exit Signs:  No  Yes  
Fire Alarm:  No  Yes  
Smoke Detection Systems:  No  Yes

**EXIT REQUIREMENTS**  
NUMBER AND ARRANGEMENT OF EXITS  
1 EXIT CLEARLY MARKED IN THE SPACE (EXISTING)



Sheet Number	Sheet Name
A-001	COVER SHEET
A-101	DEMOLITION FLOOR PLAN AND REFLECTED CEILING PLAN
A-102	FLOOR PLAN
A-103	REFLECTED CEILING PLAN
A-201	INTERIOR ELEVATIONS
A-601	DOOR & WINDOW TYPES, SCHEDULES AND DETAILS
M-101	MECHANICAL FLOOR PLANS
M-200	MECHANICAL SCHEDULES, NOTES AND DETAILS
P-100	PLUMBING DETAILS AND SCHEDULES
P-200	PLUMBING FLOOR PLAN - COMP AIR AND VACUUM PIPING
P-300	PLUMBING FLOOR PLAN - WASTE, VENT AND WATER PIPING
E1.00	GENERAL NOTES, LEGEND, AND SCHEDULES
E2.00	SINGLE-LINE DIAGRAMS AND DETAILS
E2.01	ACCESS CONTROL DETAILS
E2.02	LIGHTING AND FIRE ALARM SINGLE-LINE DIAGRAMS
E3.00	LIGHTING RENOVATION PLAN - FIRST FLOOR
E3.01	LIGHTING DEMOLITION PLAN - FIRST FLOOR
E4.00	ELECTRICAL RENOVATION PLAN - FIRST FLOOR
E4.01	ELECTRICAL DEMOLITION PLAN - FIRST FLOOR
E5.00	SYSTEMS RENOVATION PLAN - FIRST FLOOR



2/24/2015 11:16:32 AM

GOODWYN MILLS CAWOOD  
101 East Washington Street, Suite 200 | Greenville, SC 29601  
Tel 864.527.0460 | GMCNETWORK.COM

ISSUE	DATE
Issue for Bid	02/24/2015
drawn by:	WAS/JJN
checked by:	MEK

USCL NURSING SIM LAB  
476 Hubbard Dr.  
Lancaster, SC 29720  
GMC # AGRE140025  
OSE# H37-9515  
Issue for Bid

COVER SHEET  
A-001  
sheet 1 of 6









Room Schedule										
Number	Name	Floors		Walls				Ceilings		Comments
		Floor Finish	Base Finish	N Wall Finish	E Wall Finish	S Wall Finish	W Wall Finish	Ceiling Finish	Ceiling Height	
100	COUNCILING	LVT-1	RB	PNT-1	PNT-1	PNT-1	PNT-1	ACT	9' - 0"	PNT-2 ON ALL EXISTING HM DOORS & FRAMES
101	VESTIBULE	LVT-1	RB	PNT-1	PNT-1	PNT-1	PNT-1	ACT	9' - 0"	PNT-2 ON ALL EXISTING HM DOORS & FRAMES
102	EXISTING OFFICE	LVT-1	RB	PNT-1	PNT-1	PNT-1	PNT-1	ACT	9' - 0"	PNT-2 ON ALL EXISTING HM DOORS & FRAMES
103	DATA / COMM	LVT-1	RB	PNT-1	PNT-1	PNT-1	PNT-1	ACT	9' - 0"	PNT-2 ON ALL EXISTING HM DOORS & FRAMES
104	CLASSROOM	LVT-2	RB	PNT-1	PNT-1	PNT-1	PNT-1	ACT	11'0" - 6"	PNT-2 ON ALL EXISTING HM DOORS & FRAMES
105	SIM LAB	LVT-1	RB	PNT-1	PNT-1	PNT-1	PNT-1	ACT	9' - 0"	
106	SIM LAB	LVT-1	RB	PNT-1	PNT-1	PNT-1	PNT-1	ACT	9' - 0"	
107	SIM LAB	LVT-1	RB	PNT-1	PNT-1	PNT-1	PNT-1	ACT	9' - 0"	
108	CONTROL	LVT-2	RB	PNT-1	PNT-1	PNT-1	PNT-1	ACT	9' - 0"	
109	DEBRIEF	LVT-1	RB	PNT-1	PNT-1	PNT-1	PNT-1	ACT	9' - 0"	PNT-2 ON ALL EXISTING HM DOORS & FRAMES

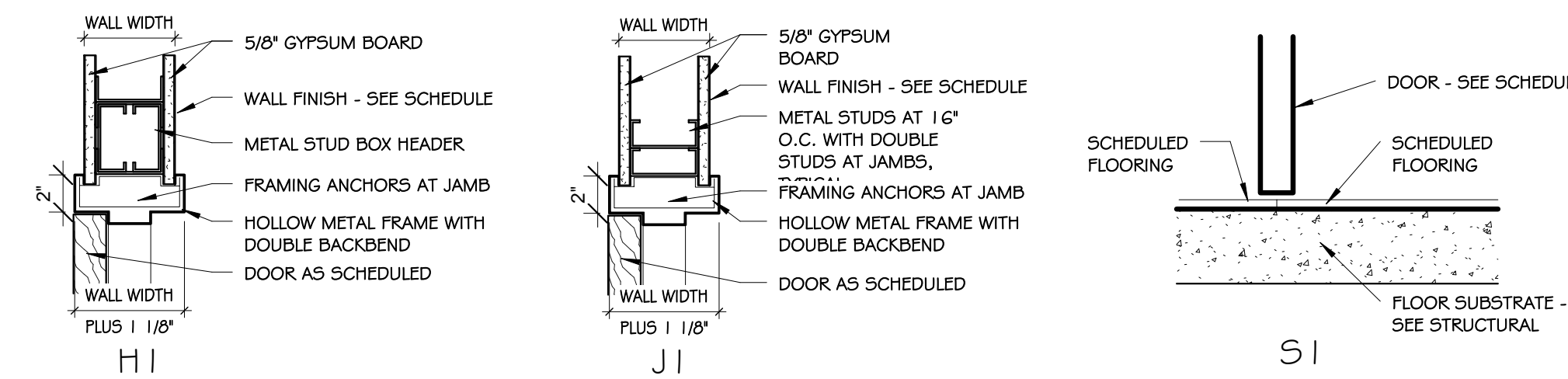
DOOR SCHEDULE														
Door Number	Type	Door			Frame		Details			Hardware	Comments			
		Width	Height	Thickness	Door Material	Door Finish	Frame Material	Frame Finish	Head			Jamb	Sill	
101	AL-P2	6' - 0"	7' - 0"	0" - 2"	ALUMINUM	ALUMINUM	F3	ALUMINUM	ALUMINUM	H2	J2	S2	SEE SPEC.	PROVIDE FROSTED FILM EQUAL TO '3M SCOTCHCAL SERIES 77255E' TO ALL GLAZING ON DOOR
105	AL-P1	7' - 2 7/8"	7' - 4"	0" - 1 3/4"	ALUMINUM	MFG	F2	ALUMINUM	ALUMINUM	MFG	MFG	MFG	SEE SPEC.	
106	AL-P1	7' - 2 7/8"	7' - 4"	0" - 1 3/4"	ALUMINUM	MFG	F2	ALUMINUM	ALUMINUM	MFG	MFG	MFG	SEE SPEC.	
107	AL-P1	7' - 2 7/8"	7' - 4"	0" - 1 3/4"	ALUMINUM	MFG	F2	ALUMINUM	ALUMINUM	MFG	MFG	MFG	SEE SPEC.	
108	WD-1	3' - 0"	7' - 0"	0" - 1 3/4"	WD	STN	F1	HM	PNT	H1	J1	S1	SEE SPEC.	

EXISTING DOOR SCHEDULE				
Door Number	Type	Door		Comments
		Door Finish	Frame Finish	
E1	ETR	ETR	PNT	EXISTING DOOR, PAINT FRAME
E2	ETR	ETR	PNT	EXISTING DOOR, PAINT FRAME
E3	ETR	ETR	PNT	EXISTING DOOR, PAINT FRAME
E4	ETR	ETR	PNT	EXISTING DOOR, PAINT FRAME

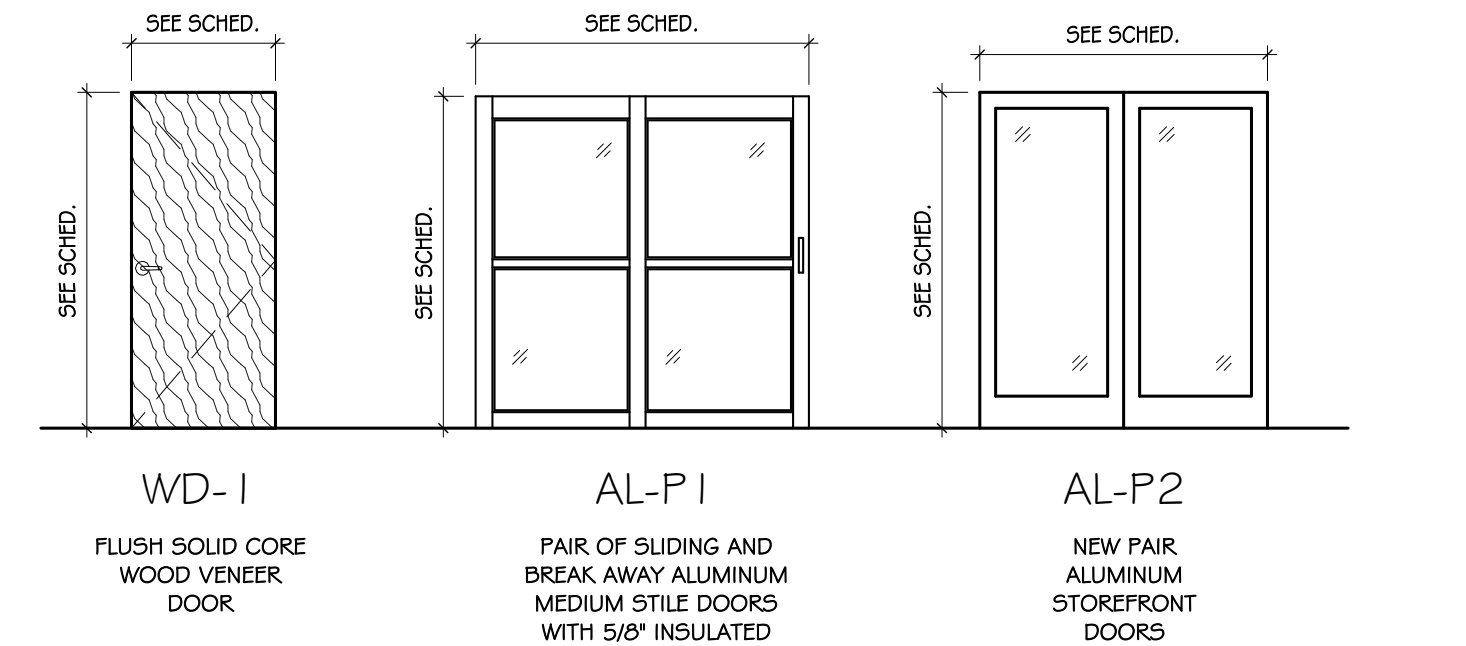
### FINISH LEGEND

FLOOR			WALL		
NUMBER	TYPE	DETAIL DESCRIPTION	NUMBER	TYPE	DETAIL DESCRIPTION
LVT-1	LUXURY VINYL TILE	MANUFACTURER: ARMSTRONG TYPE: NATURAL CREATIONS - EARTH CUTS COLOR: COOL STONE STYLE: RAW CRETE NUMBER: TP548 SIZE: 18" x 18"	PNT-1	WALL PAINT	MANUFACTURER: TBD TYPE: TBD COLOR: TBD
LVT-2	LUXURY VINYL TILE	MANUFACTURER: ARMSTRONG TYPE: NATURAL CREATIONS - EARTH CUTS COLOR: IGNEOUS ROCK STYLE: RAW CRETE NUMBER: TP547 SIZE: 18" x 18"	PNT-2	WALL PAINT	MANUFACTURER: TBD TYPE: TBD COLOR: TBD
			PNT-3	DOOR FRAME PAINT	MANUFACTURER: TBD TYPE: TBD COLOR: TBD
BASE			CEILING		
RB	RUBBER BASE	MANUFACTURER: ROPPE COLOR: BLACK BROWN NUMBER: 193 SIZE: 5" PROFILE: TBD	ACT	ACOUSTICAL CEILING TILE SYSTEM	MANUFACTURER: ARMSTRONG TYPE: TBD COLOR: TBD SIZE: 2' x 2'
DOOR STAIN			P-LAM		
STN	DOOR STAIN	MANUFACTURER: TBD COLOR: TBD	PLAM-1	PLASTIC LAMINATE COUNTERTOP	MANUFACTURER: FORMICA COLOR: NATURAL MAPLE STYLE: TBD NUMBER: TBD
			PLAM-2	PLASTIC LAMINATE CABINETS	MANUFACTURER: FORMICA COLOR: NATURAL MAPLE STYLE: TBD NUMBER: TBD
			PLAM-3	PLASTIC LAMINATE COUNTERTOP	MANUFACTURER: FORMICA COLOR: BLACK (TBD) STYLE: TBD NUMBER: TBD
			PLAM-4	PLASTIC LAMINATE CABINETS	MANUFACTURER: FORMICA COLOR: BLACK (TBD) STYLE: TBD NUMBER: TBD

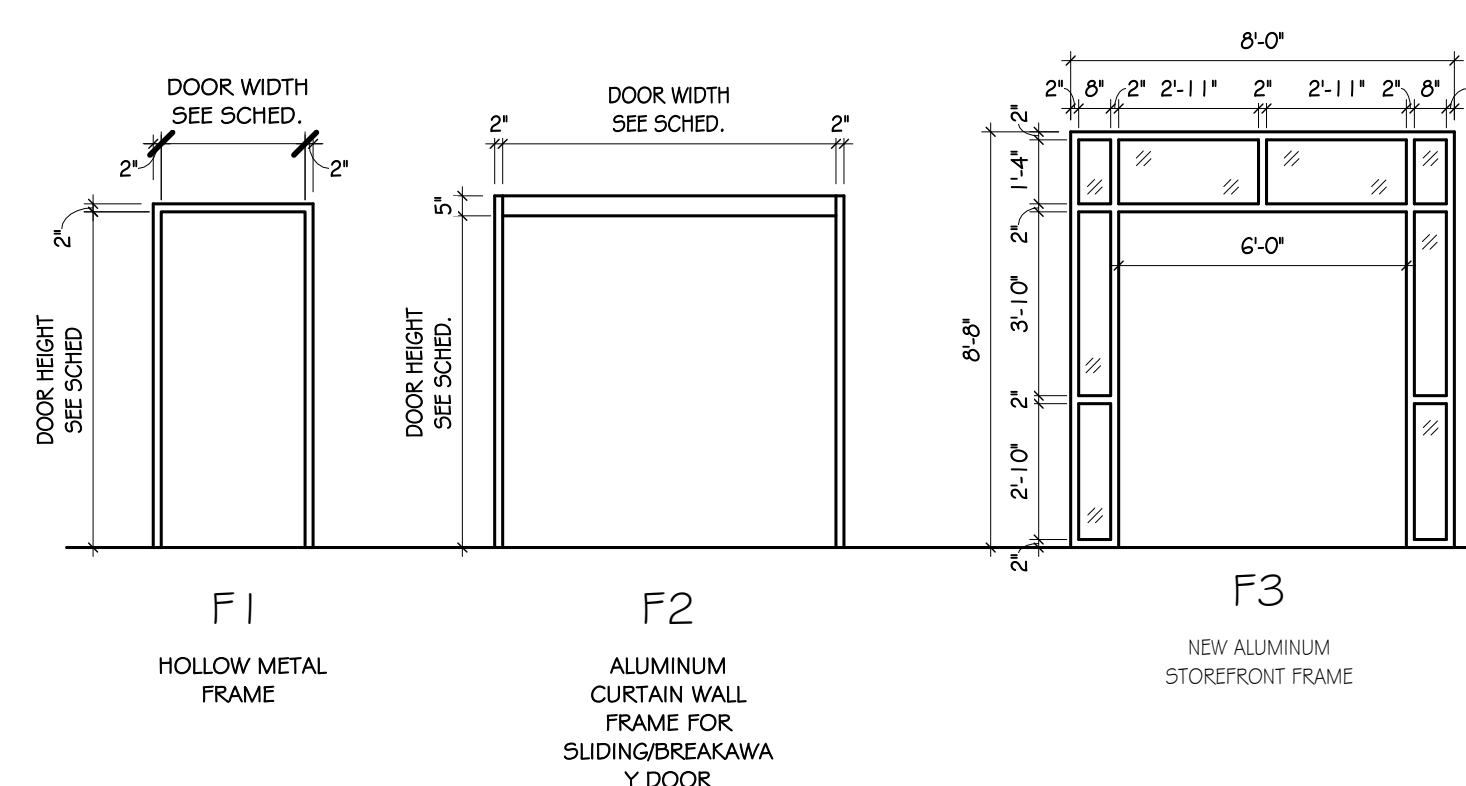
### DOOR DETAILS



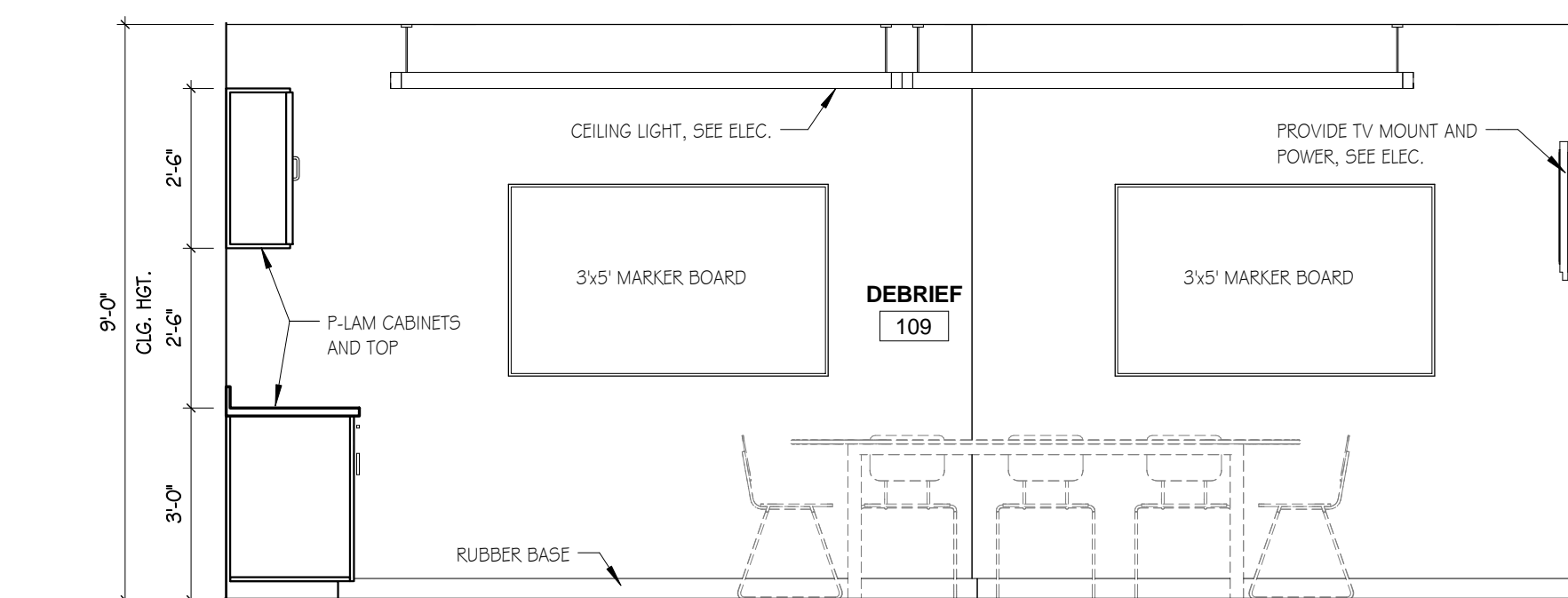
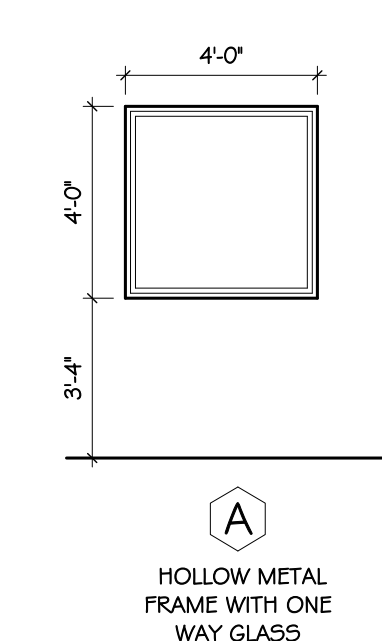
### DOOR TYPES



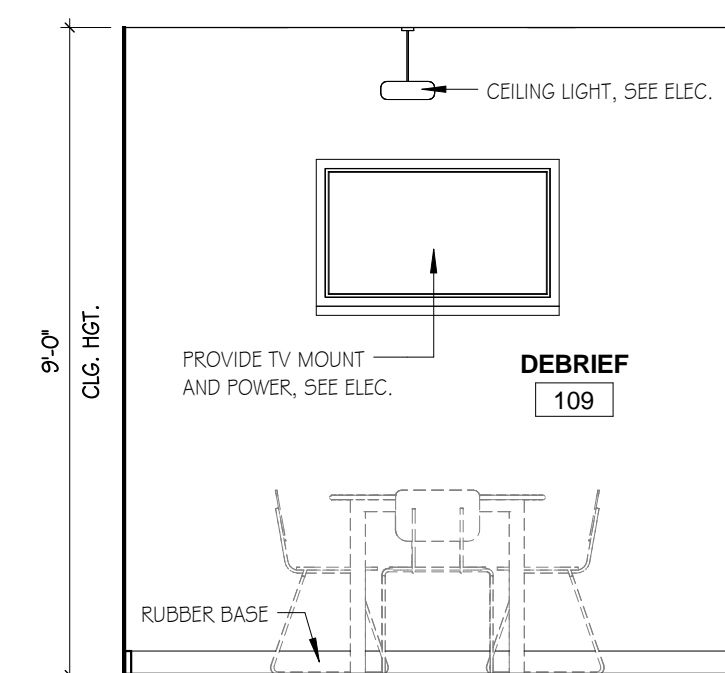
### FRAME TYPES



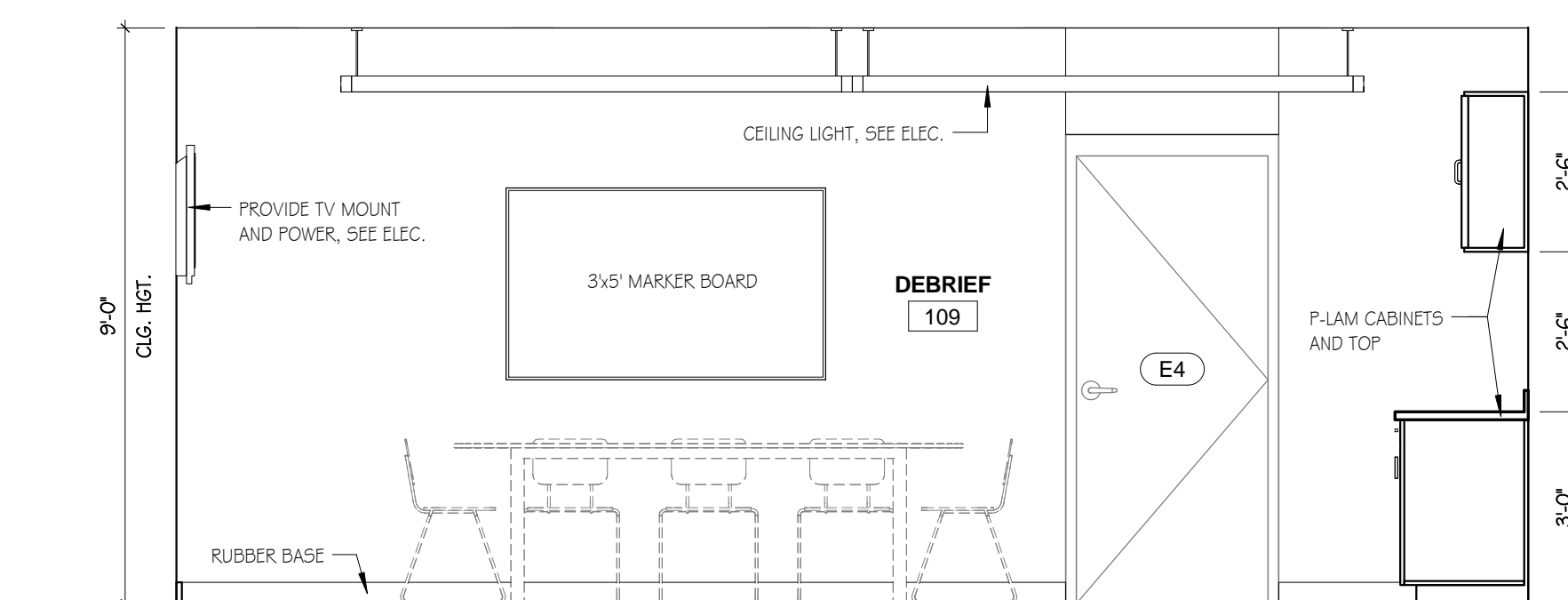
### WINDOW TYPES



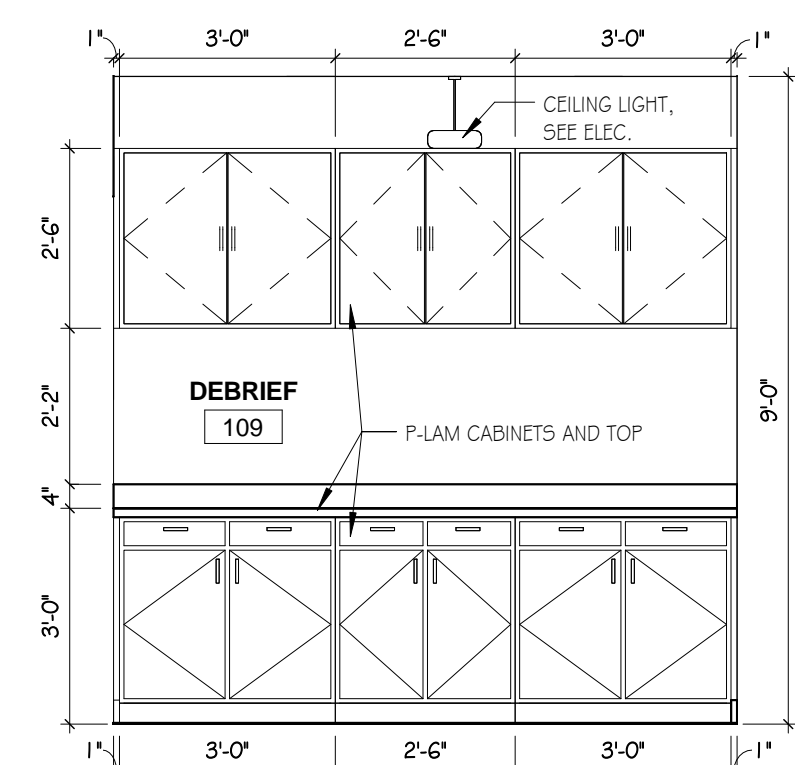
**1 ROOM 109 - INT. ELEV.1**  
SCALE: 3/8" = 1'-0"



**2 ROOM 109 - INT. ELEV.2**  
SCALE: 3/8" = 1'-0"



**3 ROOM 109 - INT. ELEV.3**  
SCALE: 3/8" = 1'-0"



**4 ROOM 109 - INT. ELEV.4**  
SCALE: 3/8" = 1'-0"

ISSUE	DATE
Issue for Bid	02/24/2015
drawn by:	WAS/JJN
checked by:	JMEK















## LIGHTING FIXTURE SCHEDULE

SYMBOL	TYPE	DESCRIPTION	MANUFACTURER	MODEL NUMBER	OPTICAL ELEMENT	MOUNTING	VOLTS	LAMPS (PHILIPS)
	A	2'x4" SPEC. GRADE DIRECT/INDIRECT FLUORESCENT TROFFER WITH 1 BALLAST AND 2 LAMPS.	WILLIAMS	DIG-S24-232-WPR-EB2-UNV	0.125" ACRYLIC LENS	CEILING GRID	120V	2 - F32T8/TL841/ALTO
	AE	2'x4" SPEC. GRADE DIRECT/INDIRECT FLUORESCENT TROFFER WITH 1 BALLAST, 2 LAMPS, AND A 1400 LUMEN BATTERY PACK.	WILLIAMS	DIG-S24-232-WPR-EB2-UNV-EM1400	0.125" ACRYLIC LENS	CEILING GRID	120V	2 - F32T8/TL841/ALTO
	B	2'x4" SPEC. GRADE DIRECT/INDIRECT FLUORESCENT TROFFER WITH 1 BALLAST AND 3 LAMPS.	WILLIAMS	DIG-S24-332-WPR-EB3-UNV	0.125" ACRYLIC LENS	CEILING GRID	120V	3 - F32T8/TL841/ALTO
	BE	2'x4" SPEC. GRADE DIRECT/INDIRECT FLUORESCENT TROFFER WITH 1 BALLAST, 3 LAMPS, AND A 1400 LUMEN BATTERY PACK.	WILLIAMS	DIG-S24-332-WPR-EB3-UNV-EM1400	0.125" ACRYLIC LENS	CEILING GRID	120V	3 - F32T8/TL841/ALTO
	C	2'x4" SPEC. GRADE DIRECT/INDIRECT FLUORESCENT TROFFER WITH 1 DIMMING BALLAST AND 3 LAMPS.	WILLIAMS	DIG-S24-332-WPR-EB3D-AD-MKX	0.125" ACRYLIC LENS	CEILING GRID	120V	3 - F32T8/TL841/ALTO
	CE	2'x4" SPEC. GRADE DIRECT/INDIRECT FLUORESCENT TROFFER WITH 1 DIMMING BALLAST, 3 LAMPS AND A 1400 LUMEN BATTERY PACK.	WILLIAMS	DIG-S24-332-WPR-EB3D-AD-MKX-EM1400	0.125" ACRYLIC LENS	CEILING GRID	120V	3 - F32T8/TL841/ALTO
	D	8' DIRECT/INDIRECT LINEAR FLUORESCENT FIXTURE WITH 2 DIMMING BALLASTS AND 6 LAMPS.	FINELITE	S12-ID-DC0-8'-3T8-SC-91W-STO-120-FA-C1 with LUTRON DIMMING BALLASTS	DIFFUSE CENTER OPTIC	AIRCRAFT CABLE AT 18" BELOW CLG	120V	6 - F32T8/TL841/ALTO
	DE	8' DIRECT/INDIRECT LINEAR FLUORESCENT FIXTURE WITH 2 DIMMING BALLASTS, 6 LAMPS, AND TWO 1400 LUMEN BATTERY PACKS.	FINELITE	S12-ID-DC0-8'-3T8-SC-91W-STO-120-FA-C1 with LUTRON DIMMING BALLASTS & EM1400	DIFFUSE CENTER OPTIC	AIRCRAFT CABLE AT 18" BELOW CLG	120V	6 - F32T8/TL841/ALTO
	F	6" L.E.D. DOWNLIGHT WITH DIMMABLE DRIVER.	INDY	LC45-1300-40-W-U-L400-P-CL-WH	0.125" ACRYLIC LENS	CEILING SURFACE	120V	L.E.D./1100 lumen/19W/4000K
	G	6" PODIUM SPOTLIGHT WITH ADJUSTABLE EYEBALL, WHITE BAFFLE AND WHITE TRIM.	INDY	LA4-2300-40-1-LA400-F-CL-WH-LB27	WHITE BAFFLE	CEILING RECESSED	120V	1 - PAR30/75W
		EDGLE -LIT TYPE L.E.D. EXIT SIGN WITH SINGLE FACE, GREEN LETTERING, AND A 90 MINUTE BATTERY PACK.	EMERGI-LITE	PN-G-6	CLEAR WITH GREEN LETTERING	UNIVERSAL WALL OR CEILING	120V	L.E.D. - COMPLY WITH 2012 IBC

NOTE: BATTERY PACK FOR FLUORESCENT FIXTURES SHALL OPERATE 2 LAMPS IN FIXTURE.

## GENERAL CONSTRUCTION NOTES

- PROVIDE ALL WORK IN ACCORDANCE WITH THE FOLLOWING CODES AND STANDARDS:
 

INTERNATIONAL BUILDING CODE	2012 EDITION
NFPA 70 - NATIONAL ELECTRICAL CODE	2011 EDITION
NFPA 72 - NATIONAL FIRE ALARM CODE	2010 EDITION
ANSI A117.1 - ACCESSIBLE AND USABLE BUILDINGS AND FACILITIES	2009 EDITION
- PROVIDE RACEWAY AND WIRING TO ALL DEVICES, FIXTURES, AND EQUIPMENT INDICATED ON THE CONTRACT DRAWINGS. THE DRAWINGS INDICATE PARTIAL RACEWAY AND WIRING REQUIREMENTS TO HELP CLARIFY DESIGN INTENT. WHERE RACEWAY AND/OR WIRING IS NOT INDICATED FOR DEVICES, FIXTURES, OR EQUIPMENT THE ARRANGEMENT, GROUPING, AND ROUTING SHALL BE PROVIDED IN ACCORDANCE WITH THE 2011 EDITION OF THE NATIONAL ELECTRICAL CODE.
- ALL CONDUIT PENETRATIONS THROUGH WALLS AND CEILINGS SHALL BE 2-HOUR FIRESTOPPED.
- RACEWAYS SHALL BE EMT WITH COMPRESSION TYPE FITTINGS UNLESS NOTED OR DETAILED OTHERWISE.
- INSTALL ELECTRICAL SYSTEMS WITHOUT INTERFERING WITH DUCTS, PIPES, STRUCTURAL MEMBERS, OR OTHER SYSTEMS.
- CUTTING, DRILLING, AND PATCHING: PROVIDE CHASES, SLOTS, AND OPENINGS IN EXISTING BUILDING COMPONENTS TO ALLOW FOR ELECTRICAL INSTALLATIONS. PERFORM CUTTING, DRILLING, FITTING, AND PATCHING REQUIRED TO:
  - INSTALL EQUIPMENT, MATERIALS, AND RACEWAYS IN EXISTING STRUCTURES.
  - REMOVE AND REPLACE DEFECTIVE WORK THAT DOES NOT CONFORM TO REQUIREMENTS OF THE CONTRACT DOCUMENTS.
  - UPON WRITTEN INSTRUCTIONS FROM THE ARCHITECT/ENGINEER, UNCOVER AND RESTORE WORK TO PROVIDE FOR ARCHITECT/ENGINEER OBSERVATION OF CONCEALED WORK.

PROTECT EXISTING STRUCTURES, FURNISHINGS, FINISHES, MECHANICAL SYSTEMS, AND ELECTRICAL SYSTEMS WHILE PERFORMING CUTTING, DRILLING, FITTING, AND PATCHING.

PATCH EXISTING SURFACES AND BUILDING COMPONENTS USING NEW MATERIALS THAT MATCH EXISTING MATERIALS. PATCHING SHALL BE PERFORMED BY EXPERIENCED INSTALLERS.

## GENERAL DEMOLITION NOTES

- REMOVE AND LEGALLY DISPOSE OF ALL EXISTING POWER AND COMMUNICATIONS SYSTEMS EQUIPMENT, CONTROLS, DEVICES, LIGHTING FIXTURES, EXIT SIGNS, AND ALL ASSOCIATED RACEWAY AND WIRING. INTENT OF THIS CONTRACT IS FOR THE CONTRACTOR TO DEMOLISH ALL EXISTING POWER, LIGHTING, AND SYSTEMS COMPONENTS AND ALL ASSOCIATED RACEWAY AND WIRING SYSTEMS IN THE AREA OF CONSTRUCTION, UNLESS SPECIFICALLY NOTED OTHERWISE. THE CONTRACTOR SHALL VISIT THE SITE/BUILDING TO FIELD VERIFY EXISTING CONDITIONS PRIOR TO BID AND SHALL INCLUDE ALL WORK REQUIRED FOR COMPLETE DEMOLITION IN HIS BID.

### ELECTRICAL DRAWING INDEX

E1.00	GENERAL NOTES, LEGEND, AND SCHEDULES
E2.00	ELECTRICAL SINGLE-LINE DIAGRAMS AND SCHEDULES
E2.01	ACCESS CONTROL DETAILS
E2.02	LIGHTING AND FIRE ALARM SINGLE-LINE DIAGRAMS
E3.00	LIGHTING RENOVATION PLAN - FIRST FLOOR
E3.01	LIGHTING DEMOLITION PLAN - FIRST FLOOR
E4.00	ELECTRICAL RENOVATION PLAN - FIRST FLOOR
E4.01	ELECTRICAL DEMOLITION PLAN - FIRST FLOOR
E5.00	SYSTEMS RENOVATION PLAN - FIRST FLOOR

## ELECTRICAL LEGEND

SYMBOL	DESCRIPTION	SYMBOL	DESCRIPTION
	LIGHTING FIXTURE; TYPE, CIRCUIT NUMBER, AND SWITCHLEG AS INDICATED. SEE THE LIGHTING FIXTURE SCHEDULE FOR ADDITIONAL SYMBOLS AND TYPES.		COMMUNICATIONS EQUIPMENT BACKBOARD. BACKBOARD SHALL BE SECURELY FASTENED TO WALL.
	SINGLE OR DOUBLE FACE EXIT SIGN, CEILING MOUNTED. PROVIDE DIRECTIONAL ARROWS/CHEVRONS AS INDICATED ON PLAN.		VOICE/DATA COMMUNICATIONS OUTLET. PROVIDE A 4" SQUARE STEEL BOX WITH PLASTER RING MOUNTED IN WALL AT 18" AFF UNLESS NOTED OTHERWISE. PROVIDE A ONE INCH EMT RACEWAY WITH PULL STRING FROM OUTLET TO COMMUNICATIONS BACKBOARD "CB1". PROVIDE A FIBER BUSHING ON BOTH ENDS OF RACEWAY.
	SINGLE OR DOUBLE FACE EXIT SIGN, WALL OR BACK MOUNTED. PROVIDE DIRECTIONAL CHEVRONS (ARROWS) AS INDICATED ON PLAN.		VOICE/DATA COMMUNICATIONS OUTLET. PROVIDE A 4" SQUARE STEEL BOX WITH PLASTER RING FLUSH MOUNTED IN WALL AT 54" AFF OR 6" ABOVE COUNTERTOP UNLESS NOTED OTHERWISE. COORDINATE MOUNTING LOCATION WITH ARCHITECTURAL MILLWORK WHERE APPLICABLE. PROVIDE A ONE INCH EMT RACEWAY WITH PULL STRING FROM OUTLET TO COMMUNICATIONS BACKBOARD "CB1". PROVIDE A FIBER BUSHING ON BOTH ENDS OF RACEWAY.
	SINGLE-POLE TOGGLE SWITCH RATED 120 VOLTS, 20 AMPS. FLUSH MOUNT SWITCH IN WALL AT 42 INCHES AFF UNLESS NOTED OTHERWISE.		THREE-WAY TOGGLE SWITCH RATED 120 VOLTS, 20 AMPS. FLUSH MOUNT DEVICE IN WALL AT 42 INCHES AFF UNLESS NOTED OTHERWISE.
	MOTOR RATED TOGGLE SWITCH RATED 1 HORSEPOWER. FLUSH MOUNT DEVICE IN WALL AT 42 INCHES AFF UNLESS NOTED OTHERWISE.		DATA COMMUNICATIONS OUTLET. PROVIDE A 4" SQUARE STEEL BOX WITH SINGLE-GANG PLASTER RING FLUSH MOUNTED IN ACoustICAL DROP CEILING TILE AT LOCATION DIRECTED BY OWNER (OUTLET TO SERVE OVERHEAD PROJECTOR). PROVIDE A CEILING GRID BRACKET TO SUPPORT BACKBOX. PROVIDE A ONE INCH EMT RACEWAY WITH PULL STRING FROM OUTLET TO COMMUNICATIONS BACKBOARD "CB1". PROVIDE A FIBER BUSHING ON BOTH ENDS OF RACEWAY.
	LIGHTING DIMMER SWITCH, LUTRON NOVA-T- FLUORESCENT, INCANDESCENT OR MAGNETIC LOW-VOLTAGE TYPE, AS APPLICABLE. FLUSH MOUNT SWITCH IN WALL AT 42" AFF UNLESS NOTED OR DETAILED OTHERWISE.		CABLE TELEVISION OUTLET. PROVIDE A 4" SQUARE STEEL BOX WITH SINGLE-GANG PLASTER RING FLUSH MOUNTED IN WALL AT 18" AFF. PROVIDE A ONE INCH EMT RACEWAY WITH PULL STRING FROM OUTLET TO COMMUNICATIONS BACKBOARD "CB1". PROVIDE A FIBER BUSHING ON BOTH ENDS OF RACEWAY.
	SINGLE-POLE TOGGLE SWITCH WITH "ON WHEN ON" PILOT LIGHT RATED 120 VOLTS, 20 AMPS. MOUNT DEVICE IN WALL AT 42 INCHES AFF UNLESS NOTED OTHERWISE.		SOUND SYSTEM SPEAKER OUTLET. PROVIDE A SINGLE-GANG STEEL BOX AND WALLPLATE WITH 3/8" BUSHED OPENING MOUNTED TO STRUCTURE ABOVE CEILING. PROVIDE A 3/4" INCH EMT RACEWAY WITH PULL STRING FROM OUTLET TO FLUSH BOX AS SHOWN ON PLAN. PROVIDE A FIBER BUSHING ON ALL ENDS OF RACEWAY.
	4-PRESET CONTROL UNIT (LUTRON # QSGR-6P-WH). FLUSH MOUNT PANEL IN WALL WITH TOP AT 48" AFF.		SURFACE MOUNTED CONTROL PANEL, TYPE AS NOTED ON PLAN.
	LIGHTING CONTROL PANEL REMOTE OVERRIDE SWITCH WITH INTEGRAL PILOT LIGHT (WATTSTOPPER). FLUSH MOUNT SWITCH IN WALL AT 48" AFF. PROVIDE WIRING/CABLING PER WATTSTOPPER RECOMMENDATIONS. PROVIDE A CUSTOM LAMINATE SIGN ABOVE SWITCH THAT READS, "LIGHTING SYSTEM 2-HOUR TIME OVERRIDE SWITCH. PRESS SWITCH TO PROVIDE 2 HOURS OF EXTENDED LIGHTING EACH TIME CLASSROOM AREA LIGHTS BLINK ON AND OFF. IF BUTTON IS NOT PRESSED WITHIN 5 MINUTES OF LIGHTS BLINKING, ALL LIGHTS IN CLASSROOM AREA WILL AUTOMATICALLY TURN OFF".		FLUSH MOUNTED CONTROL PANEL, TYPE AS NOTED ON PLAN.
	OCCUPANCY SENSOR, RADIO-FREQUENCY TYPE (LUTRON # LRF2-OCR2B-P-WH). FLUSH MOUNT DETECTOR IN ACoustICAL DROP CEILING. PROVIDE A CEILING GRID SUPPORT BRACKET FOR BACKBOX.		FIRE ALARM SYSTEM ADDRESSABLE RELAY INTERFACE CONTROL MODULE. MOUNT MODULE IN A STEEL NEMA-1 ENCLOSURE.
	NIGHT-LIGHT SYMBOL - INDICATES THAT ASSOCIATED LIGHTING FIXTURE SHALL NOT BE SWITCHED LOCALLY (WIRED DIRECTLY TO CIRCUIT BREAKER).		FIRE ALARM MANUAL PULL STATION. SURFACE MOUNT STATION ON WALL WITH TOP OF STATION AT 48 INCHES ABOVE FINISHED FLOOR. PROVIDE STATION MANUFACTURER'S CUSTOM SURFACE BACKBOX TO MOUNT STATION.
	ONE-SECTION PANELBOARD, SURFACE MOUNTED WITH TOP AT 66" AFF.		ADDRESSABLE PHOTO-ELECTRIC SMOKE DETECTOR. SEMI-FLUSH MOUNT DETECTOR IN CEILING. PROVIDE CEILING-GRID SUPPORT BRACKET TO SUPPORT DETECTOR BACKBOX. MAINTAIN U.L. LISTED SPACING WHEN DETERMINING EXACT DETECTOR MOUNTING LOCATION.
	ELECTRICAL CONNECTIONS TO A MOTOR OR TO MOTOR DRIVEN EQUIPMENT.		VISIBLE (STROBE) NOTIFICATION APPLIANCE. SEMI-FLUSH MOUNT APPLIANCE IN CEILING. PROVIDE CEILING-GRID SUPPORT BRACKET TO SUPPORT APPLIANCE BACKBOX. PROVIDE STROBE MANUFACTURER'S CUSTOM SURFACE BACKBOX WHERE STROBE IS MOUNTED ON NON-ACCESSIBLE CEILINGS. PROVIDE STROBE WITH CANDELA RATING NOTED ON PLAN.
	SAFETY DISCONNECT SWITCH - TYPE AND RATINGS AS INDICATED ON PLAN. COORDINATE MOUNTING LOCATION WITH MECHANICAL CONTRACTOR TO ENSURE PROPER WORKING CLEARANCES PER THE NEC.		VISIBLE (STROBE) NOTIFICATION APPLIANCE. SEMI-FLUSH MOUNT APPLIANCE IN WALL WITH BOTTOM OF APPLIANCE A MINIMUM OF 80 INCHES ABOVE FINISHED FLOOR AND/OR TOP OF APPLIANCE A MAXIMUM OF 96 INCHES ABOVE FINISHED FLOOR. PROVIDE STROBE MANUFACTURER'S CUSTOM SURFACE BACKBOX WHERE STROBE IS MOUNTED ON NON-ACCESSIBLE WALL. PROVIDE STROBE WITH CANDELA RATING NOTED ON PLAN.
	SYSTEM GROUNDING - PROVIDE GROUNDING IN ACCORDANCE WITH NEC ARTICLE 250.		COMBINATION AUDIBLE/VISIBLE (SPEAKER & STROBE) NOTIFICATION APPLIANCE. SEMI-FLUSH MOUNT APPLIANCE IN ACCESSIBLE CEILINGS. PROVIDE CEILING-GRID SUPPORT BRACKET TO SUPPORT APPLIANCE BACKBOX. PROVIDE APPLIANCE MANUFACTURER'S CUSTOM SURFACE BACKBOX WHERE APPLIANCE IS MOUNTED ON NON-ACCESSIBLE CEILINGS. PROVIDE APPLIANCE WITH STROBE CANDELA RATING NOTED ON PLAN.
	STEEL JUNCTION BOX, WALL MOUNTED.		COMBINATION AUDIBLE/VISIBLE (SPEAKER & STROBE) NOTIFICATION APPLIANCE. SEMI-FLUSH MOUNT APPLIANCE IN WALL WITH BOTTOM OF APPLIANCE A MINIMUM OF 80 INCHES ABOVE FINISHED FLOOR AND/OR TOP OF APPLIANCE A MAXIMUM OF 96 INCHES ABOVE FINISHED FLOOR. PROVIDE APPLIANCE MANUFACTURER'S CUSTOM SURFACE BACKBOX WHERE APPLIANCE IS MOUNTED ON NON-ACCESSIBLE WALL. PROVIDE APPLIANCE WITH STROBE CANDELA RATING NOTED ON PLAN.
	STEEL JUNCTION BOX, UNIT OR CEILING MOUNTED UNLESS NOTED OTHERWISE.		CCTV CAMERA OUTLET. PROVIDE A SINGLE-GANG STEEL BOX FLUSH MOUNTED IN CEILING TILE. PROVIDE AN ERICO GRID SUPPORT BRACKET FOR BOX. PROVIDE A 3/4" INCH EMT RACEWAY WITH PULL STRING FROM OUTLET TO CONTROL PANEL "CCTV1" OR "CCTV2" AS NOTED ON PLAN. PROVIDE A FIBER BUSHING ON BOTH ENDS OF RACEWAY.
	DUPLEX RECEPTACLE, NEMA 5-20R. FLUSH MOUNT DEVICE IN WALL AT 18" AFF UNLESS NOTED OTHERWISE.		CCTV CAMERA OUTLET. PROVIDE A SINGLE-GANG STEEL BOX AND WALLPLATE WITH 3/8" BUSHED OPENING FLUSH IN WALL AT 84" AFF. PROVIDE A 3/4" INCH EMT RACEWAY WITH PULL STRING FROM OUTLET TO CONTROL PANEL "CCTV1" OR "CCTV2" AS NOTED ON PLAN. PROVIDE A FIBER BUSHING ON BOTH ENDS OF RACEWAY.
	QUADPLEX RECEPTACLE (TWO DUPLEX RECEPTACLES, AS DESCRIBED ABOVE, MOUNTED IN A COMMON BOX). FLUSH MOUNT DEVICES IN WALL AT 18" AFF UNLESS NOTED OTHERWISE.		ARLINGTON # TVBU505 2-GANG (1 POWER & 1 LOW-VOLTAGE) WHITE RECESSED TV BOX.
	DUPLEX RECEPTACLE AS DESCRIBED ABOVE EXCEPT THAT MOUNTING HEIGHT SHALL BE 42 INCHES AFF OR APPROXIMATELY 6 INCHES ABOVE COUNTER TOP. COORDINATE MOUNTING LOCATION WITH ARCHITECTURAL MILLWORK WHERE APPLICABLE.		ARLINGTON # TVBU507 3-GANG (1 POWER & 2 LOW-VOLTAGE) WHITE RECESSED TV BOX.
	DUPLEX, GROUND-FAULT-INTERRUPT TYPE RECEPTACLE, NEMA 5-20R. FLUSH MOUNT DEVICE AT 18" AFF UNLESS NOTED OTHERWISE.		EXISTING 2'x4" FLUORESCENT TROFFER - TO REMAIN IN PLACE.
	DUPLEX, GROUND-FAULT-INTERRUPT TYPE RECEPTACLE, NEMA 5-20R. FLUSH MOUNT DEVICE IN WALL AT 42" AFF OR APPROXIMATELY 6" ABOVE COUNTER. COORDINATE MOUNTING LOCATION WITH ARCHITECTURAL MILLWORK WHERE APPLICABLE.		EXISTING 8' FLUORESCENT STRIP FIXTURE - REMOVE.
	DUPLEX, GROUND-FAULT-INTERRUPT TYPE RECEPTACLE, NEMA 5-20R, WITH A WEATHERPROOF IN-USE TYPE BOX/COVER. FLUSH MOUNT DEVICE HORIZONTALLY IN WALL AT APPROXIMATELY 18" AFF OR AFG, AS APPLICABLE.		EXISTING WALL MOUNTED LIGHT SWITCH - REMOVE.
	HOSPITAL-GRADE DUPLEX RECEPTACLE, NEMA 5-20R, WHITE IN COLOR. FLUSH MOUNT DEVICE IN HOSPITAL BED HEADWALL - COORDINATE LOCATION IN HEAD WALL WITH HEAD WALL SHOP DRAWINGS. PROVIDE GFI TYPE DEVICE WHERE NOTED ON PLAN.		EXISTING 120-VOLT WALL MOUNTED RECEPTACLE - REMOVE.
	HOSPITAL-GRADE DUPLEX RECEPTACLE, NEMA 5-20R, RED IN COLOR. FLUSH MOUNT DEVICE IN HOSPITAL BED HEADWALL - COORDINATE LOCATION IN HEAD WALL WITH HEAD WALL SHOP DRAWINGS. PROVIDE GFI TYPE DEVICE WHERE NOTED ON PLAN.		EXISTING WALL MOUNTED DATA OUTLET - REMOVE.
	DUPLEX RECEPTACLE, NEMA 5-20R. PROVIDE A 4" SQUARE STEEL BACKBOX WITH SINGLE-GANG PLASTER RING FLUSH MOUNTED IN ACoustICAL DROP CEILING TILE AT LOCATION DIRECTED BY OWNER (OUTLET TO SERVE OVERHEAD PROJECTOR). PROVIDE A CEILING GRID BRACKET TO SUPPORT BACKBOX.		EXISTING CEILING MOUNTED CAMERA - REMOVE AND TURN OVER TO OWNER.
	A.D.A. COMPLIANT FLUSH FLOOR BOX WITH TWO 5-20R DUPLEX RECEPTACLES AND ONE TWO-PORT DATA WALLPLATE w/ TWO CATEGORY-6 RJ-45 JACKS. FLUSH MOUNT BOX IN EXISTING CONCRETE FLOOR PER MANUFACTURER'S INSTRUCTIONS.		
	12"x12"x4" STEEL JUNCTION BOX WITH SCREW COVER FOR DATA WIRING TO OWNER-FURNISHED PROJECTOR. MOUNT BOX TO STRUCTURE ABOVE CEILING AT LOCATION DIRECTED BY OWNER.		
	STEEL HANDY BOX FOR POWER TO OWNER-FURNISHED PROJECTOR SCREEN. MOUNT BOX ABOVE CEILING AT LOCATION DIRECTED BY OWNER.		

### ISSUE / DATE

Issue for Bid 02/24/15

Issue for Bid

Issue for Bid

Issue for Bid

Issue for Bid

Issue for Bid

Issue for Bid

Issue for Bid

Issue for Bid

Issue for Bid



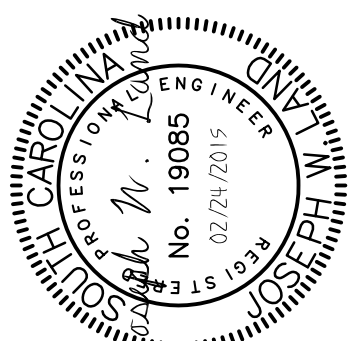
### USCL NURSING SIM LAB

476 Hubbard Dr. Lancaster, SC

**GMC # AGRE140025**

**ose # H37-9515**

Issue for Bid



### GENERAL NOTES, LEGEND, AND DETAILS

**E1.00**  
sheet of

GOODWYN MILLS CAWOOD



101 E. Washington Street, Suite 320 | Greenville, SC 29601  
Tel 864.233.2804 | GMCNETWORK.COM

















